



Cloud Protection Manager

**Enterprise-class Backup, Recovery
and Disaster Recovery for Amazon EC2**



www.n2ws.com



info@n2ws.com



+1.888.426.4329

Cloud Protection Manager

Enterprise-class Backup, Recovery and Disaster Recovery for Amazon EC2

Snapshot

- Automated Backup and Recovery of EC2 instances, EBS volumes, RDS and Redshift using Amazon snapshots
- Flexible and scalable: supports multiple regions, users, and accounts per user
- Snapshot Vaults with cross AWS account backup and recovery
- Centrally managed from a single secured CPM server within your environment
- Comprehensive policies and scheduling, enabling near-CDP backup policies
- Disaster Recovery support: copy and replicate to different AWS regions
- Recovery of EC2 environments in just seconds
- Application-consistent live backups
- Automatic policy-based retention management
- Alerts and notifications

Cloud Protection Manager (CPM) is a unique, fully-featured enterprise-class backup and recovery solution custom-built for Amazon EC2. With an easy-to-use interface and leveraging native Amazon snapshot capabilities, CPM protects valuable business data and mission-critical applications in the AWS cloud environment.

Live and consistent application backup:

Just like leading local virtualized datacenter backup and recovery solutions, CPM enables consistent backup of EC2-based applications, including MySQL, MongoDB, Oracle, PostgreSQL, SQL Server, Exchange, Active Directory, SharePoint and more.

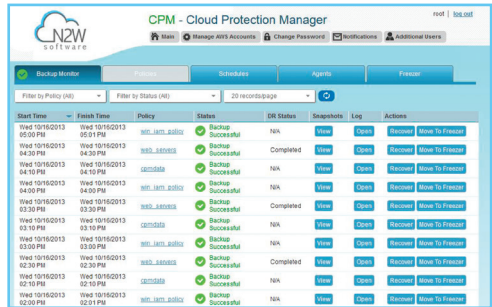
Snapshot Vaults: CPM enables users to create “Snapshot Vaults”, with automatic policy-based copying/moving of snapshots across AWS accounts, protection against snapshot deletion and one-click, instance-recovery of volumes and complete servers back into the main AWS account.

Policy-based backups: Offering extensive, flexible policy-based backups, CPM delivers complete control over backup operations: backup targets and scheduling, retention management, failure handling and retries, and more.

Virtual High Availability: CPM supports high frequency snapshots to provide near-high availability for mission-critical applications.

Rapid Recovery: CPM allows recovery of complete servers or specific volumes in seconds.

Disaster Recovery: With CPM, complete instances including all data and configuration are recoverable in other AWS regions in only seconds.



The screenshot shows the CPM - Cloud Protection Manager interface. At the top, there is a navigation bar with the CPM logo and the text "CPM - Cloud Protection Manager". Below the navigation bar, there are several tabs: "Backup Monitor", "Policies", "Schedules", "Agents", and "Policies". The "Backup Monitor" tab is active, displaying a table of backup jobs. The table has columns for "Start Time", "Finish Time", "Policy", "Status", "DB Status", "Snapshots", "Log", and "Actions". The table contains 12 rows of data, all showing successful backup operations.

Start Time	Finish Time	Policy	Status	DB Status	Snapshots	Log	Actions
Wed 10/16/2013 10:00 PM	Wed 10/16/2013 10:01 PM	HEL_1001_0001	Backup Successful	N/A	View	Open	Recover Move To Freshair
Wed 10/16/2013 11:30 PM	Wed 10/16/2013 11:30 PM	HEL_1001_0001	Backup Successful	Completed	View	Open	Recover Move To Freshair
Wed 10/16/2013 04:10 PM	Wed 10/16/2013 04:10 PM	HEL_1001_0001	Backup Successful	N/A	View	Open	Recover Move To Freshair
Wed 10/16/2013 04:00 PM	Wed 10/16/2013 04:00 PM	HEL_1001_0001	Backup Successful	N/A	View	Open	Recover Move To Freshair
Wed 10/16/2013 03:30 PM	Wed 10/16/2013 03:30 PM	HEL_1001_0001	Backup Successful	Completed	View	Open	Recover Move To Freshair
Wed 10/16/2013 02:30 PM	Wed 10/16/2013 02:30 PM	HEL_1001_0001	Backup Successful	N/A	View	Open	Recover Move To Freshair
Wed 10/16/2013 02:10 PM	Wed 10/16/2013 02:10 PM	HEL_1001_0001	Backup Successful	N/A	View	Open	Recover Move To Freshair
Wed 10/16/2013 02:30 PM	Wed 10/16/2013 02:30 PM	HEL_1001_0001	Backup Successful	Completed	View	Open	Recover Move To Freshair
Wed 10/16/2013 02:10 PM	Wed 10/16/2013 02:10 PM	HEL_1001_0001	Backup Successful	N/A	View	Open	Recover Move To Freshair
Wed 10/16/2013 02:10 PM	Wed 10/16/2013 02:10 PM	HEL_1001_0001	Backup Successful	N/A	View	Open	Recover Move To Freshair
Wed 10/16/2013 02:00 PM	Wed 10/16/2013 02:00 PM	HEL_1001_0001	Backup Successful	N/A	View	Open	Recover Move To Freshair

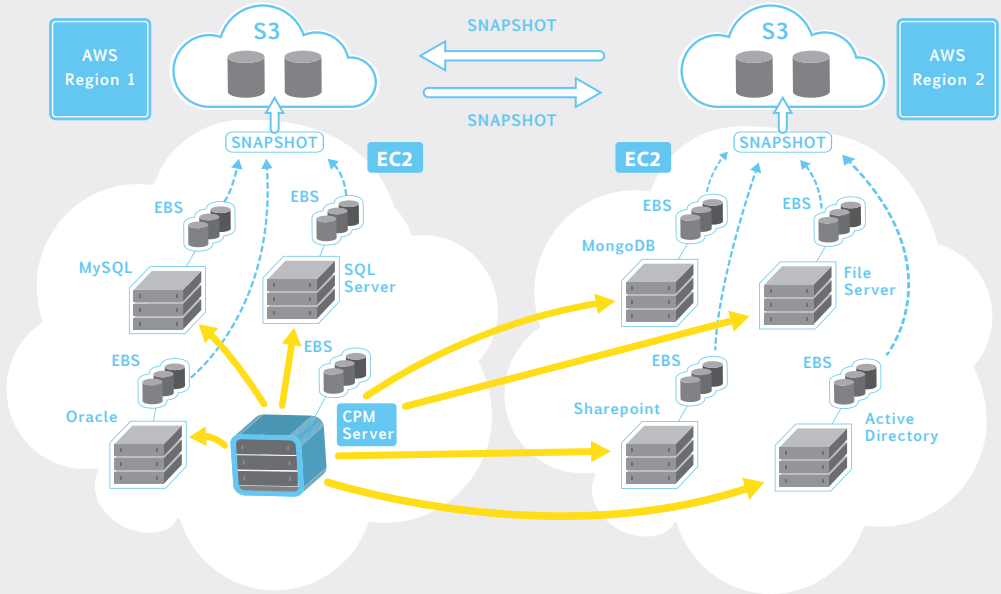
Security: CPM implements various means to keep backups and data tightly secured, including:

- **Complete Access Control:** Running on a dedicated instance within users' EC2 environment and VPC subnet, CPM assures users to have full and complete access control by configuring security groups. Users' AWS credentials are never stored elsewhere.
- **IAM users & Roles and Multi-tenancy support:** To enhance environment access control, CPM supports IAM credentials for AWS account access as well as IAM Roles. CPM also enables creation of multiple users, each managing multiple AWS accounts.
- **Encryption:** All communication to and from the CPM Server is encrypted, and secret keys are stored in an encrypted format.

Alerts and notifications: CPM provides a comprehensive set of alerts and notifications to ensure that no event is left unnoticed.

- **Alerts:** receive alerts by email or SMS
- **Pull Alerts:** define pull alerts from CPM for integration into third-party monitoring solutions
- **Daily Summary:** daily summaries of events may be automatically pushed by email
- **Data Reporting:** allows export of raw reporting data for report creation

CPM: EC2 Multi-Region Backup & DR Architecture



About N2W Software

N2W Software is a leading provider of innovative backup and recovery management solutions for cloud-based environments. Founded in 2012, N2W Software is committed to delivering solutions that address the real-world problems that arise as mission-critical applications and data are moved into the cloud.



www.n2ws.com



info@n2ws.com



+1.888.426.4329